

Leicester PNA

Health and Wellbeing Scrutiny

Commission

4 November 2014

Leicester

Structure of Needs Assessment

- Population profile of Leicester
- Local health needs
- Local health needs by wards in Leicester
- Pharmacy provision
 - Essential Services
 - Advanced Services
 - Community based services
- Access to pharmacies
- People's views of pharmacy services
- Projected future needs
- Analysis of gaps in services
- Engagement
- Conclusions
- Recommendations
- Equality Impact Assessment

Health Needs 1

- In 2013, the population of Leicester was 333,812 people
- Leicester's population is relatively young compared with England;
 - a third of all city households include dependent children
 - 20% (65,400) of Leicester's population are aged 20-29 years old (14% in England)
 - 12% (38,750) of the population are aged over 65 (17% in England)
- The population of Leicester is growing and by 2037 the total population is predicted to reach 378,000 people, a total population growth of 13.3%
- In the next 10 years, the population is predicted to grow to 356,000 as follows:
 - An increase in 0-19 year olds (of 5,600)
 - An increase in the over 55s of 13,700 with the largest increase in 60-79 year olds (10,800) and over 80s (2,300)

Health Needs 2

- High levels of deprivation
- Diverse population: 50% White, 37% Asian or Asian British
- Low life expectancy in Leicester (men 77.0, women 81.8)
- High rates of premature mortality in all causes, cardiovascular diseases and COPD
- High smoking prevalence in west of city
- High levels of diabetes
- Poor sexual health

Burden of disease

- 43,233 people on GP hypertension registers
- 24,554 people on GP diabetes registers
- 19,858 people on GP asthma registers
- 17,523 people on GP depression registers
- 10,022 people on GP coronary heart disease registers
- 9,311 people on GP hypothyroidism registers
- 5,145 people on GP COPD registers
- 4,442 people on GP stroke or transient ischaemic attacks registers
- 4,171 people on GP cancer registers
- 3,709 people on GP mental health registers

Pharmacy Services

Essential services

Advanced services

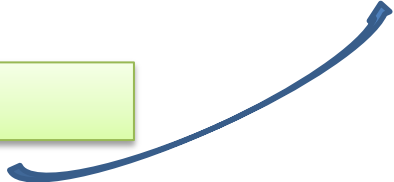
Community based services

Essential Services

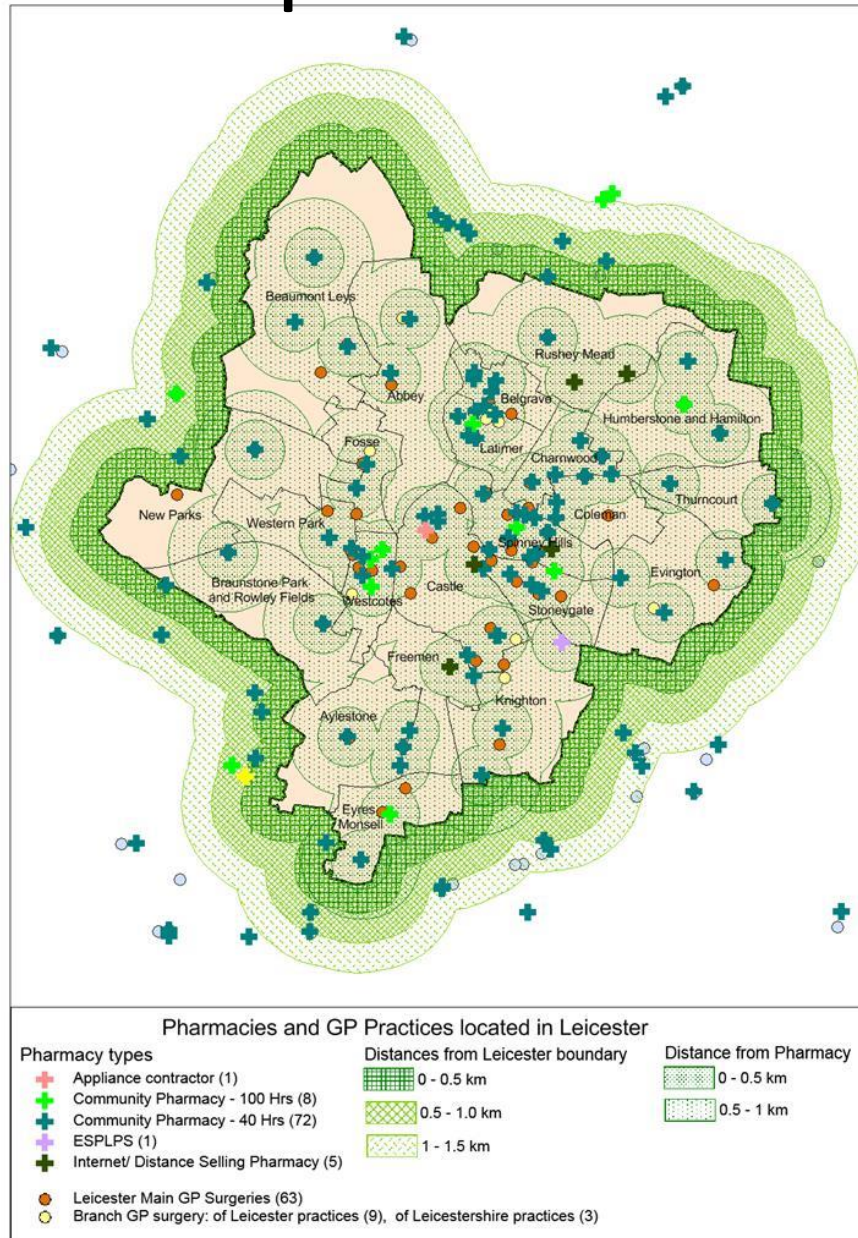
Ward name	Total No. Pharmacies	Essential Small Pharmacies Local Pharmaceutical Services	Internet/Distance Selling Pharmacy	Appliance contractor	Pharmacies per 10,000 population
Abbey	2	0	0	0	1.2
Aylestone	4	0	0	0	3.4
Beaumont Leys	3	0	0	0	1.7
Belgrave	5	0	0	0	3.8
Braunstone Park & Rowley Fields	2	0	0	0	1.0
Castle	8	0	1	1	3.0
Charnwood	5	0	0	0	3.1
Coleman	4	0	0	0	2.4
Evington	3	0	0	0	2.5
Eyres Monsell	3	0	0	0	2.4
Fosse	2	0	0	0	1.5
Freemen	1	0	1	0	0.8
Humberstone and Hamilton	3	0	0	0	1.5
Knighton	4	1	0	0	2.2
Latimer	7	0	0	0	4.5
New Parks	1	0	0	0	0.5
Rushey Mead	3	0	2	0	1.7
Spinney Hills	10	0	1	0	3.5
Stoneygate	6	0	0	0	2.6
Thurncourt	2	0	0	0	1.8
Westcotes	6	0	0	0	4.3
Western Park	3	0	0	0	2.7
Leicester City	87	1	5	1	2.4

- Overall, Leicester has 2.4 pharmacies per 10,000 population
- Latimer has the most at 4.5
- New Parks has the least at 0.5
- There are no dispensing GPs

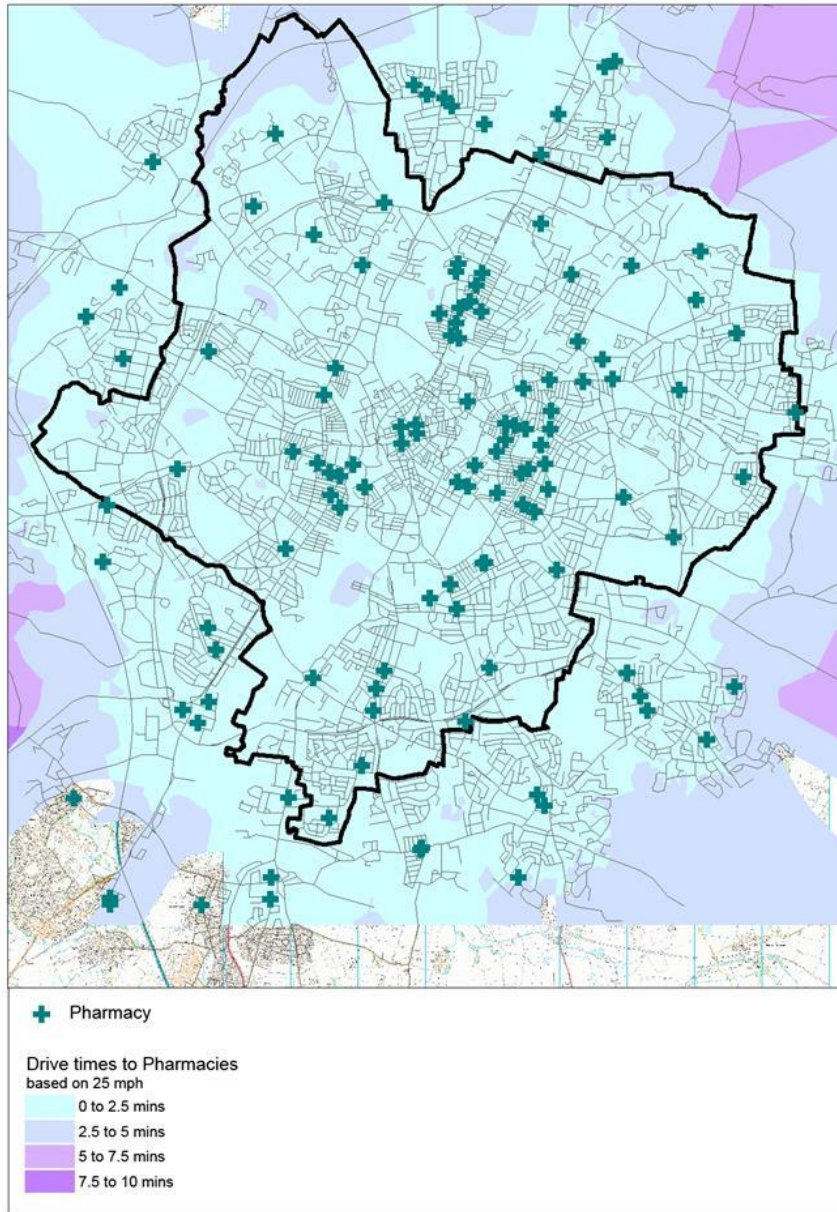
national average of 2.02



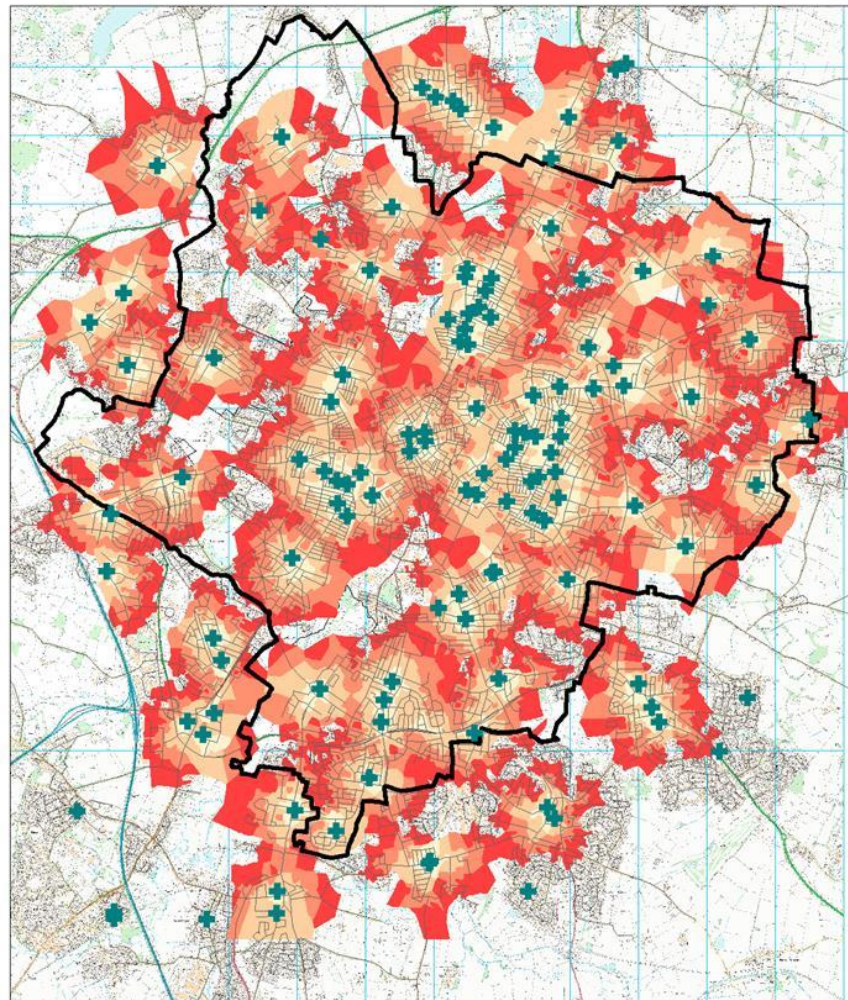
Location of pharmaceutical services



Drive-time to pharmacies



Walk time to pharmacies



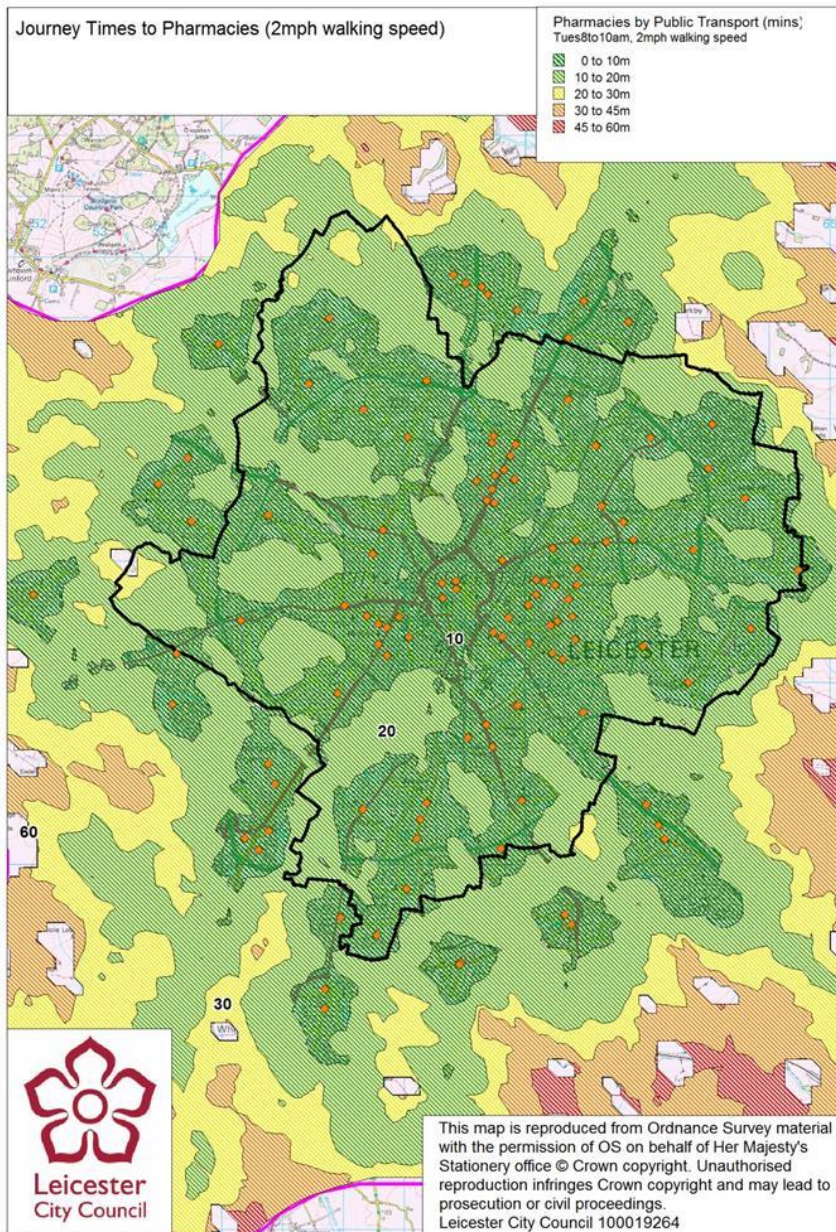
Most patients will be able to walk to their nearest pharmacy within 20 minutes

+ Pharmacy

Walking times from Pharmacies
based on 2 mph

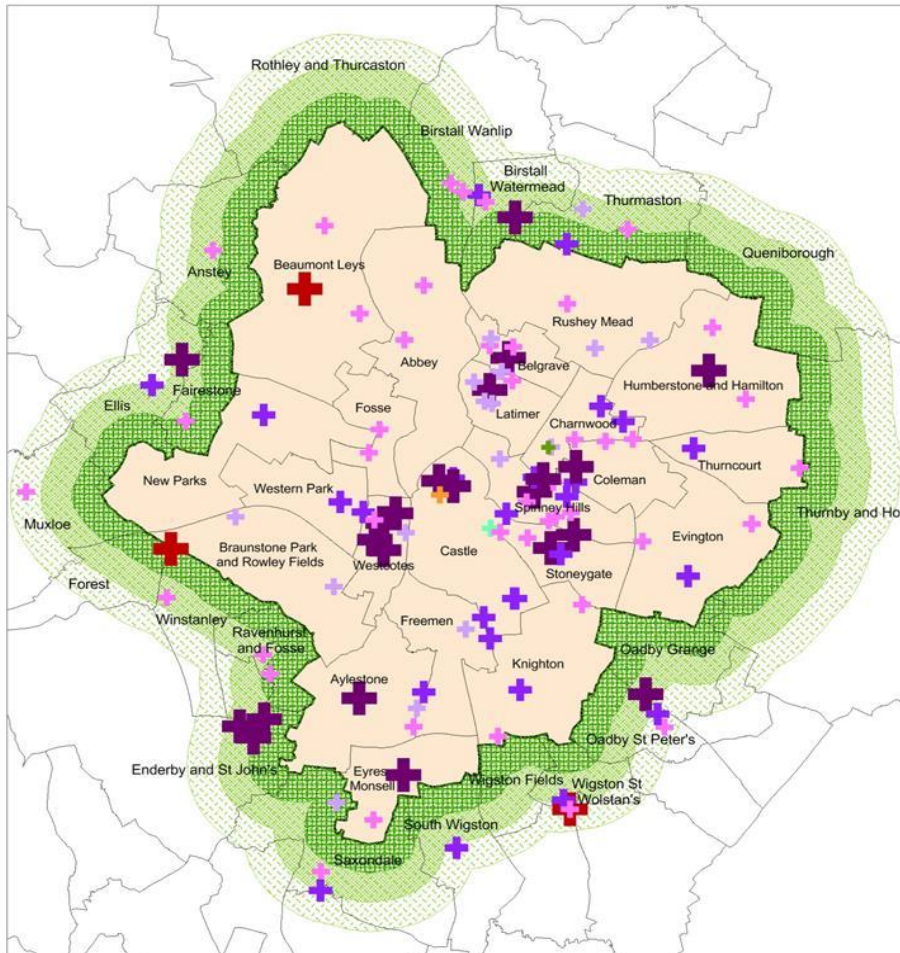
- 15 to 20 mins
- 10 to 15 mins
- 5 to 10 mins
- 0 to 5 mins

Public transport travel times



The majority of Leicester's residents should be able to travel to their nearest pharmacy within 20 minutes using public transport

Opening Hours



Pharmacies and GP Practices located in Leicester

Pharmacy opening hours

- Weekdays only (12)
- Weekdays and Sat am (32)
- Weekdays and sat (20)
- 7 days std hours (1)
- Weekdays late and weekends (16)
- Internet (5)
- Appliance Contractor (1)

Distances from Leicester boundary

- 0 - 0.5 km
- 0.5 - 1.0 km
- 1 - 1.5 km

Walk-in Centres

- SSAFA

Less pharmacies and less opening hours in the west of the city

- Freeman has an internet pharmacy only
- Rushey Mead has 2 internet pharmacies and 1 pharmacy open 52 hours per week including Saturday morning
- 5 wards have less than 100 open pharmacy hours per week
 - New Parks: one pharmacy open for 47 hours per week including Saturday
 - Abbey: 2 pharmacies, total of 87 hours including Saturday morning
 - Fosse: 2 pharmacies, total of 92 hours including Saturday morning
 - Thurncourt: 2 pharmacies, total of 95 hours including Saturday morning
 - Braunstone Park and Rowley Fields: 2 pharmacies, total of 96 hours, closed weekends
- Spinney Hills has the highest provision: 10 pharmacies open for a total of 533 hours per week, including one 100 hour pharmacy, one internet pharmacy, late weekday opening hours and weekends

Discussion

- 1) Other gaps we should highlight
- 2) Is there enough coverage with community pharmacies
– equity of pharmacies
- 3) Should we be making any recommendations to NHS
England about their future commissioning plans

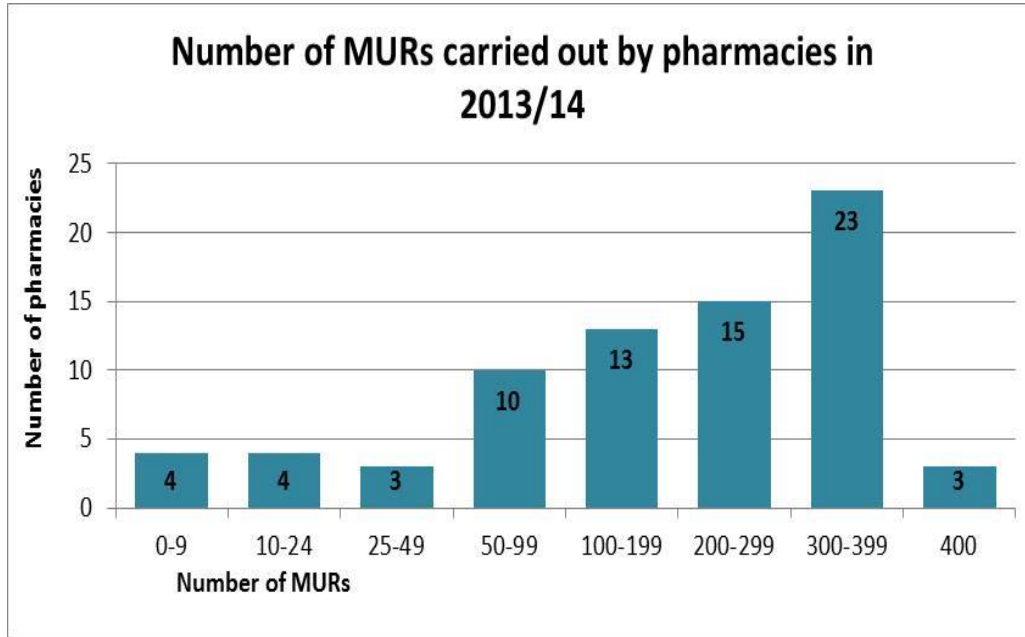
Advanced Services

Pharmacies providing Advanced Services

Ward name	No. of Pharmacies	Medicines Use Review	New Medicine Service	Appliance Use Review	Stoma Appliance Customisation
Abbey	2	1	1		
Aylestone	4	4	4	2	2
Beaumont Leys	3	3	3	1	1
Belgrave	5	4	3		
Braunstone Park & Rowley Fields	2	2	2		
Castle	8	6	6		
Charnwood	5	5	4	1	1
Coleman	4	4	4	1	
Evington	3	3	2		
Eyres Monsell	3	3	2	1	1
Fosse	2	1			
Freemen	1				
Humberstone and Hamilton	3	3	3		
Knighton	4	4	3	2	1
Latimer	7	5	5		
New Parks	1	1	1		
Rushey Mead	3	2	2		
Spinney Hills	10	9	8	1	1
Stoneygate	6	5	3		
Thurmcourt	2	2	1	1	
Westcotes	6	5	5		
Western Park	3	3	3		
Leicester Total	87	75	65	10	7
Distance from Leicester boundary	No. of Pharmacies	Medicines Use Review	New Medicine Service	Appliance Use Review	Stoma Appliance Customisation
0 km to 0.5km	9	8	3		
0.5km to 1km	15	15	14	2	2
1km to 1.5km	8	8	8		

- 75 out of the 87 pharmacies in Leicester provide MURs (86%)
- In 2013/14 16,121 reviews were carried out, 49 MURs per 1,000 pop
- Lowest rate in Abbey
- Highest rate in Spinney Hills (33 MURs per 1,000 population)

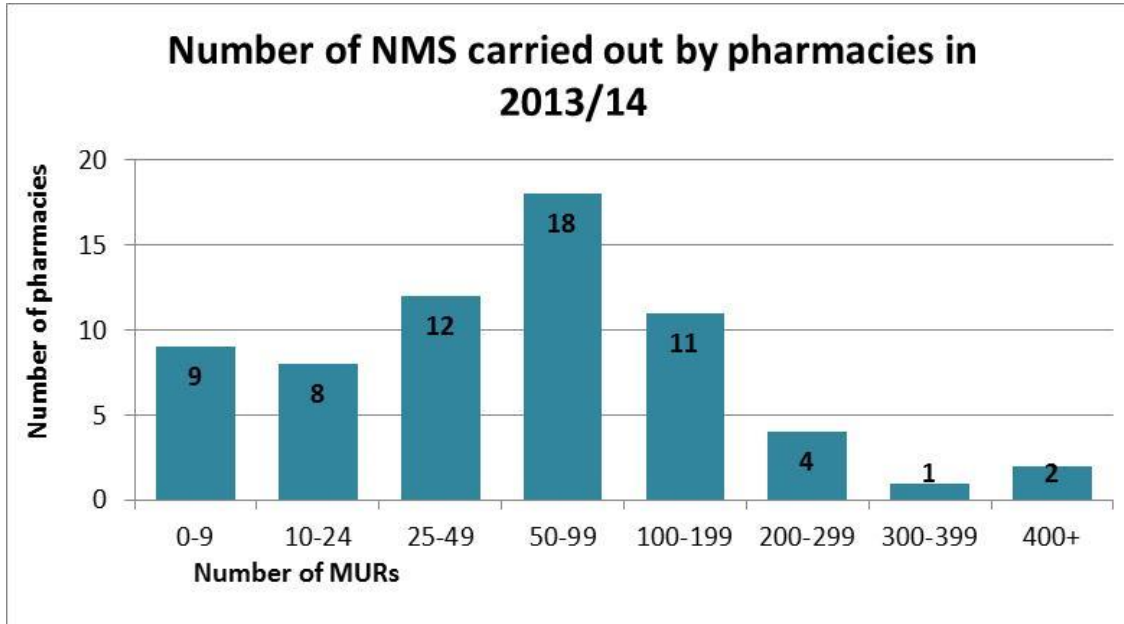
Medicines Use Reviews



National average is 92% of pharmacies providing MURs
86% of pharmacies in Leicester

- 75 out of the 87 pharmacies in Leicester provide MURs (86%)
- In 2013/14 16,121 reviews were carried out, 49 MURs per 1,000 pop
 - No provision in Freeman
 - Lowest rate in Abbey
 - Highest rate in Spinney Hills (33 MURs per 1,000 population)
- Max number per year is 400 carried out by 3 pharmacies

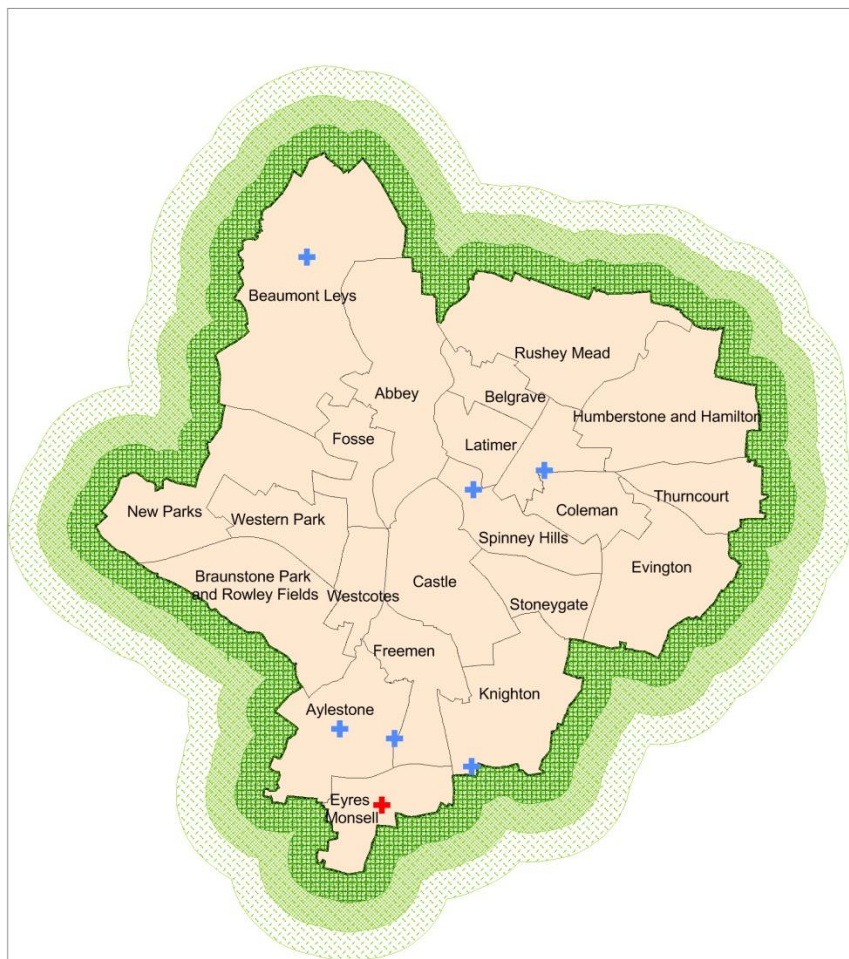
New Medicines Service



- 65 out of 87 providing NMS
- 2013/14 - 5,698 NMS, 173 per 1,000 population
- No provision in Freeman or Fosse
- Lowest rate in Abbey
- Highest rate in Aylestone 40 NMS per 1,000 population

**National average is 68% of pharmacies providing NMS
75% of pharmacies in Leicester**

Stoma Appliance Customisation



Pharmacies offering Stoma Appliance Customisation in Leicester City

Stoma Appliance Customisation pharmacies

- + Community Pharmacy - 100 Hrs (1)
- + Community Pharmacy - 40 Hrs (6)

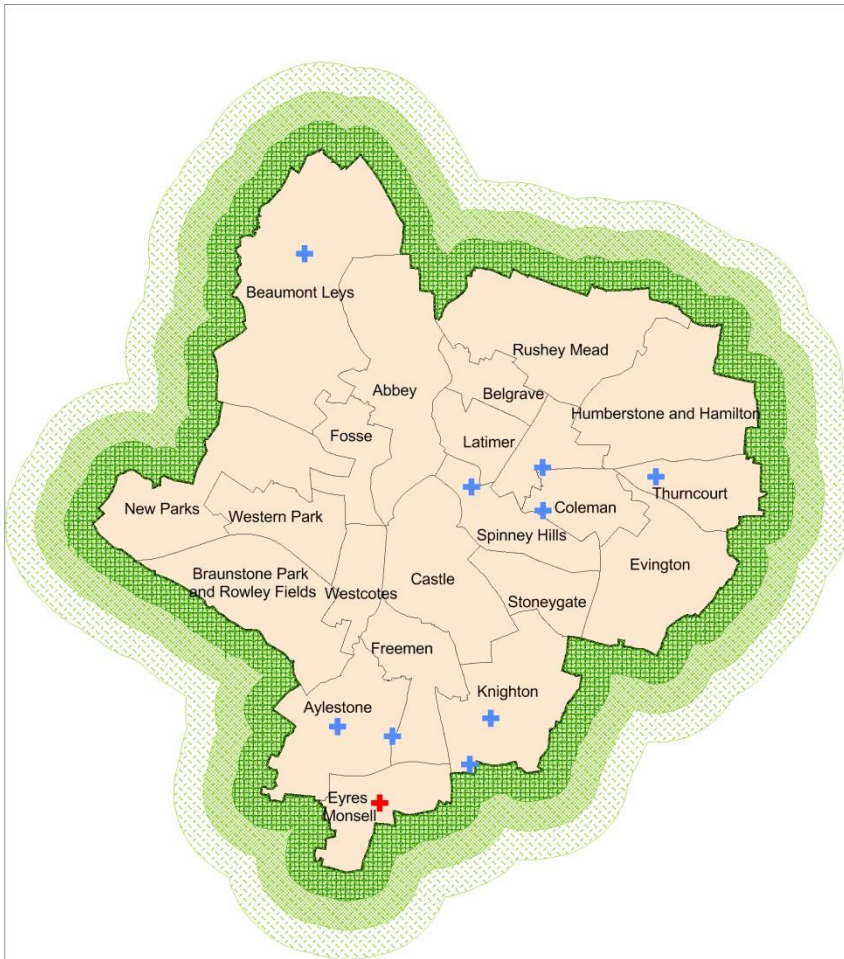
Distances from Leicester boundary

- 0 - 0.5 km
- 0.5 - 1.0 km
- 1 - 1.5 km

- In Leicester, 7 pharmacies provide SAC
- Lack of provision in west of city and east around the border
- SAC provision in 6 of 22 wards with 2 pharmacies providing SAC in Aylestone

National average is 15.2% of pharmacies providing SAC
8% of pharmacies in Leicester

Appliance Use Reviews



Pharmacies offering Appliance Use Reviews in Leicester City

Appliance Use Review Pharmacies

- + Community Pharmacy - 100 Hrs (1)
- + Community Pharmacy - 40 Hrs (9)

Distances from Leicester boundary

- 0 - 0.5 km
- 0.5 - 1.0 km
- 1 - 1.5 km

- In Leicester, 11 pharmacies provide AURs
- 8 of Leicester's 22 wards have pharmacies providing AURs
- Lack of provision in the west
 - Aylestone and Knighton have 2 pharmacies each providing AURs

National average is 12% of pharmacies providing AUR
 11.5% of pharmacies in Leicester

Key Messages

- Good coverage of advanced services
- Opportunity to maximise the levels of activity in pharmacies
- Recommendation to NHS England to increase activity levels in the pharmacies that are providing MURs

Discussion

- Other gaps we should highlight
- Is there enough coverage within community
- Is there equitable coverage within the community
- Should we be making any recommendations to NHS England about their future commissioning plans

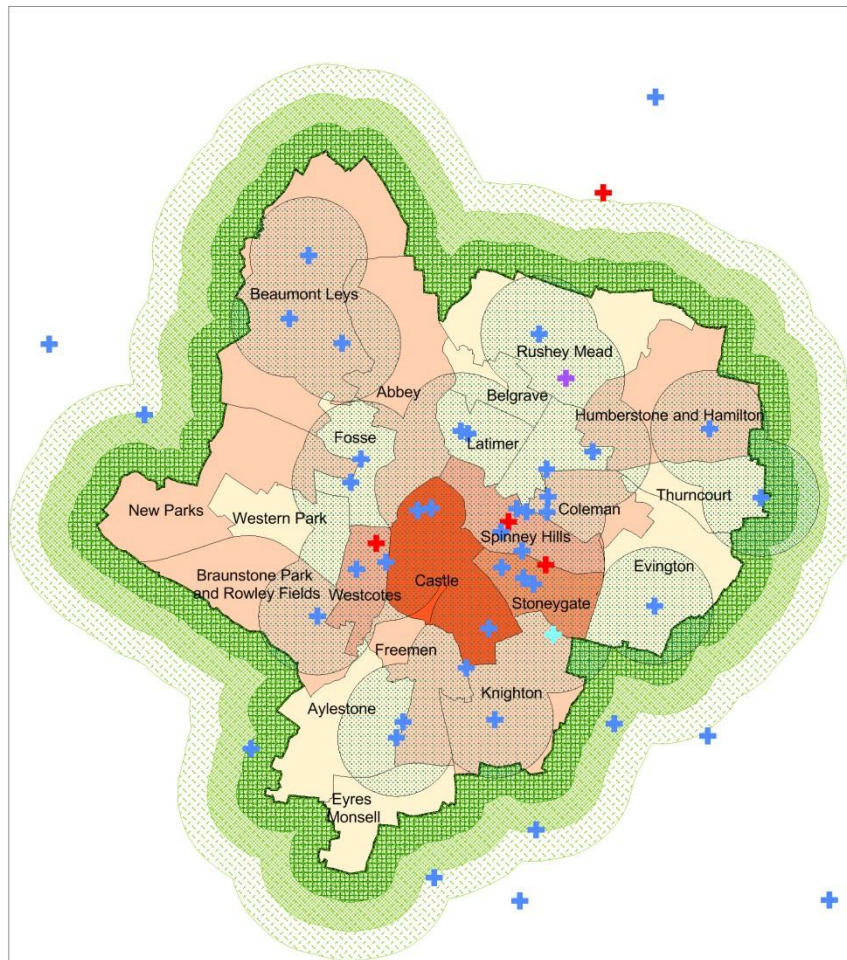
Community Based Services

Community Based Services

Ward name	No. of Pharmacies	Alcohol brief interventions	Chlamydia screening	Emergency Hormonal Contraception	H-Pylori breath testing	Healthy Living Pharmacy	Minor Ailments	Needle exchange	Supervised consumption	Stop Smoking	Palliative care	Total no services, excl MUR, NMS
Abbey	2			1			1		2	1	1	6
Aylestone	4		2	3	3		3	1	4	2		22
Beaumont Leys	3		3	3	1		2	1	3	2	2	19
Belgrave	5			2	2		4	1	2	2	1	14
Braunstone Park & Rowley Fields	2		1	1	1		1	1	2	2		9
Castle	8		3	5	2		1		5	4		20
Charnwood	5		2	2	2		2	2	3	5	1	21
Coleman	4		3	4	3		3	1	2	3	1	21
Evington	3		1	2	1		1		2			7
Eyres Monsell	3			1					1	2		6
Fosse	2		2	2	1				1	2		8
Freemen	1											0
Humberstone and Hamilton	3		1	2					2	3		8
Knighton	4		3	3	3		2	1	1	2		18
Latimer	7		2	5	3		3		1	3	1	18
New Parks	1			1			1	1	1	1		5
Rushey Mead	3		2	2	2		2		1	1		10
Spinney Hills	10		4	6	2		6	1	6	5	2	34
Stoneygate	6		5	5	4		4	1	2	3	1	25
Thurncourt	2		1	2			2		2	2		10
Westcotes	6		3	3	4		4		5	3	1	23
Western Park	3				2		2	1	1	2		8
Leicester Total	87		38	55	36		44	12	49	50	11	312
of pharmacies offering services		0.0%	43.7%	63.2%	41.4%	0.0%	50.6%	13.8%	56.3%	57.5%	12.6%	

- No community based services in Freeman, 34 services within Spinney Hills
- Alcohol brief interventions and health living pharmacy services not currently offered in Leicester pharmacies

Chlamydia Screening



Pharmacies offering Chlamydia Screening Services in Leicester City and surrounding area

Chlamydia Screening Pharmacies in Leicester

- + Community Pharmacy - 100 Hrs (3)
- + Community Pharmacy - 40 Hrs (33)
- + ESPLPs (1)
- + Internet/ Distance Selling Pharmacy (1)

Distances from Leicester boundary

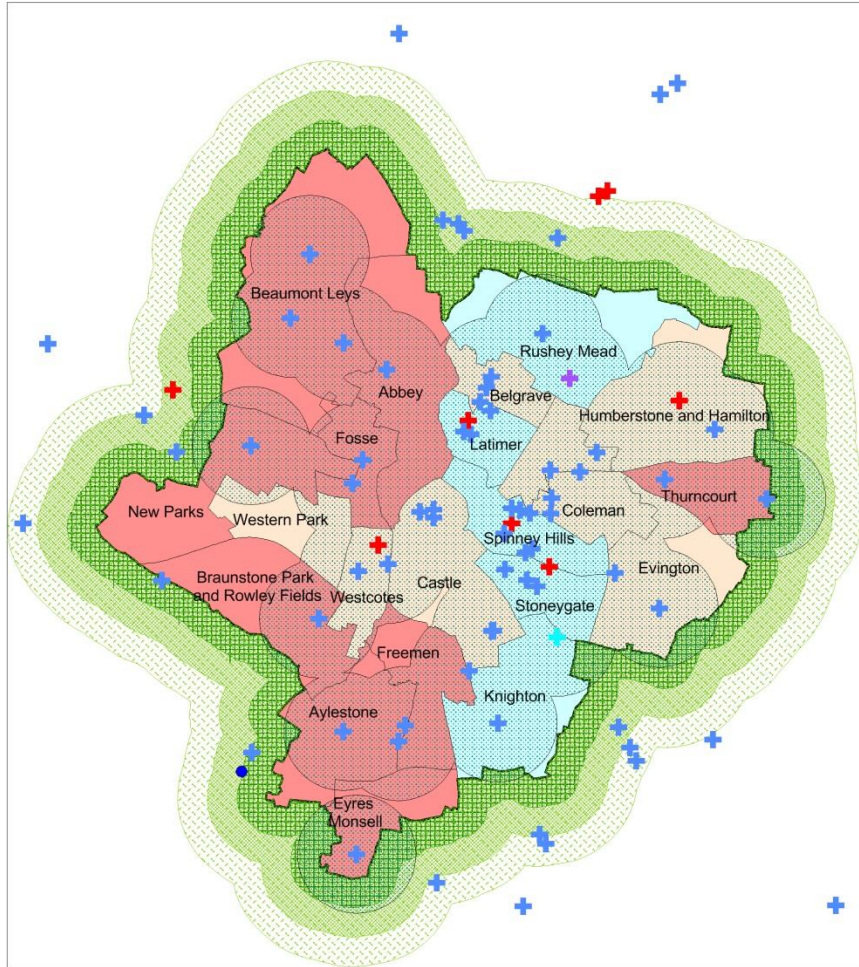
- 0 - 0.5 km
- 0.5 - 1.0 km
- 1 - 1.5 km

Population aged 15-24 years ONS estimates 2012

- 10,000 to 12,500 (1)
- 4,000 to 5,000 (1)
- 3,000 to 4,000 (2)
- 2,000 to 3,000 (8)
- 1,200 to 2,000 (10)

- 38 pharmacies have signed up to chlamydia screening
- Less provision available in west of Leicester
- Low uptake of screening for NCMP (awaiting data)
- Is this an effective delivery model?

Emergency Hormonal Contraception



Pharmacies offering Emergency Hormonal Contraception Services in Leicester City and surrounding area

EHC Pharmacies

+	Community Pharmacy - 100 Hrs	(5)	(15)
+	Community Pharmacy - 40 Hrs	(48)	(119)
+	ESPLPS	(1)	(3)
+	Internet/ Distance Selling Pharmacy	(1)	(1)

Under 18 Conception rate per 1,000 15-17

Significance compared with England, 2009-11

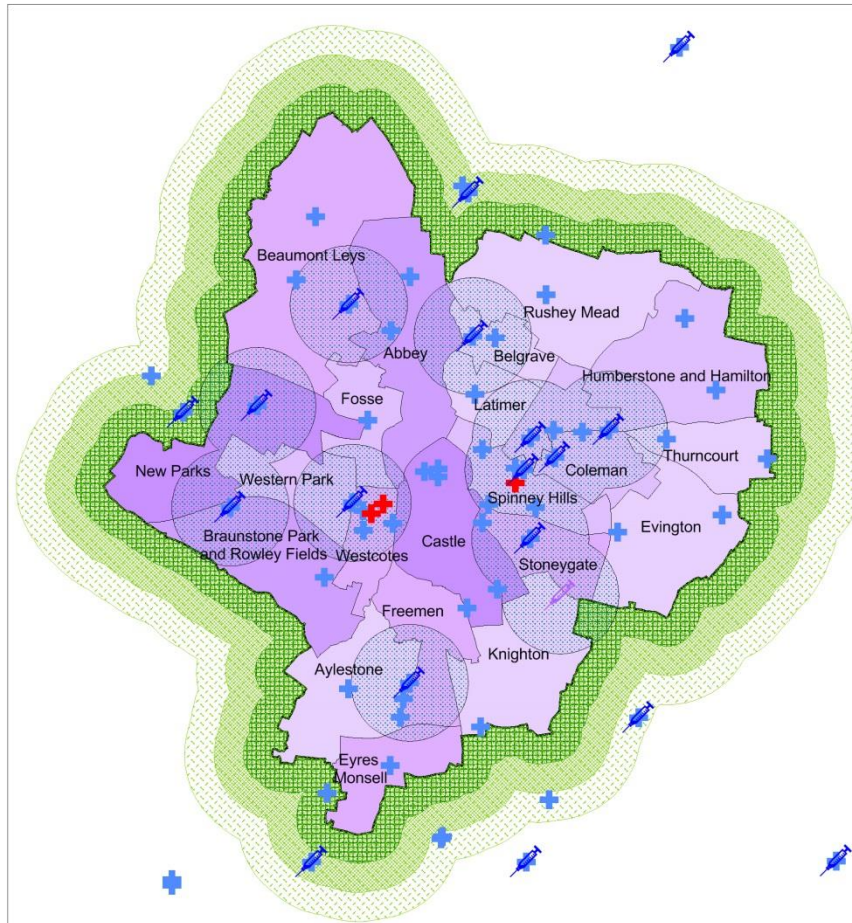
□	Not Significant	(8)
■	Significantly Higher	(9)
■	Significantly Lower	(5)

Distances from Leicester boundary

■	0 - 0.5 km	■	1 - 1.5 km
■	0.5 - 1.0 km		

- 55 pharmacies have signed up to EHC (63%)
- 1,576 claims for EHC (Apr-Dec 2013)
- Overall consultation rate in Leicester pharmacies was 513 consultations per 1,000 females aged 15-24
- 77% of EHC was provided in City Centre (Castle ward)
- 16% of EHC provided in Westcotes
- Gaps in service with teenage pregnancy hotspots but young people may prefer to use city centre pharmacies?

Needle Exchange and Supervised Consumption



Pharmacies offering Needle exchange and Supervised Consumption Services in Leicester City and surrounding area

Supervised Consumption Pharmacies

- + Community Pharmacy - 100 Hrs (3)
- + Community Pharmacy - 40 Hrs (46)

Needle exchange Pharmacies

- + Community Pharmacy - 100 Hrs (0)
- + Community Pharmacy - 40 Hrs (11)
- + ESPLPS (1)

Numbers in Drug treatment, 2013/14 Leicester Recovery Partnership

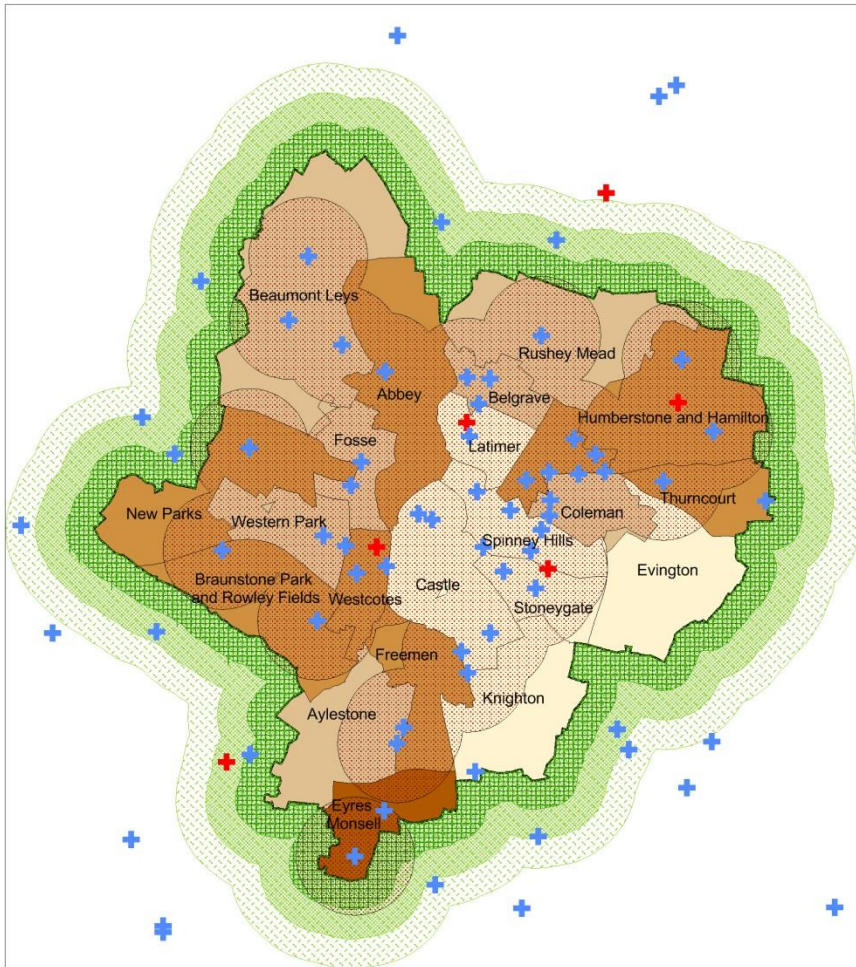
- 100 to 119 (2)
- 75 to 100 (2)
- 50 to 75 (5)
- 25 to 50 (6)
- 13 to 25 (7)

Distances from Leicester boundary

- 0 - 0.5 km
- 0.5 - 1.0 km
- 1 - 1.5 km

- Needle exchange provided in 12 pharmacies
- 47 pharmacies signed up for supervised consumption
- Numbers of individuals using needle exchange services are highest in Stoneygate and Western Park
- No data on supervised consumption
- Numbers in drug treatment higher in west of Leicester

Smoking Cessation 1



Pharmacies offering Stop Smoking Services in Leicester City and surrounding area

Stop smoking pharmacies in Leicester City

- ⊕ Community Pharmacy - 100 Hrs (4)
- ⊕ Community Pharmacy - 40 Hrs (46)

Distances from Leicester boundary

- 0 - 0.5 km
- 0.5 - 1.0 km
- 1 - 1.5 km
- 1km buffer from pharmacy

Estimated smoking prevalence

Leicester Lifestyle Survey 2010

- 39.5 to 43.2 (1)
- 29.5 to 39.5 (8)
- 19.5 to 29.5 (7)
- 9.3 to 19.5 (6)

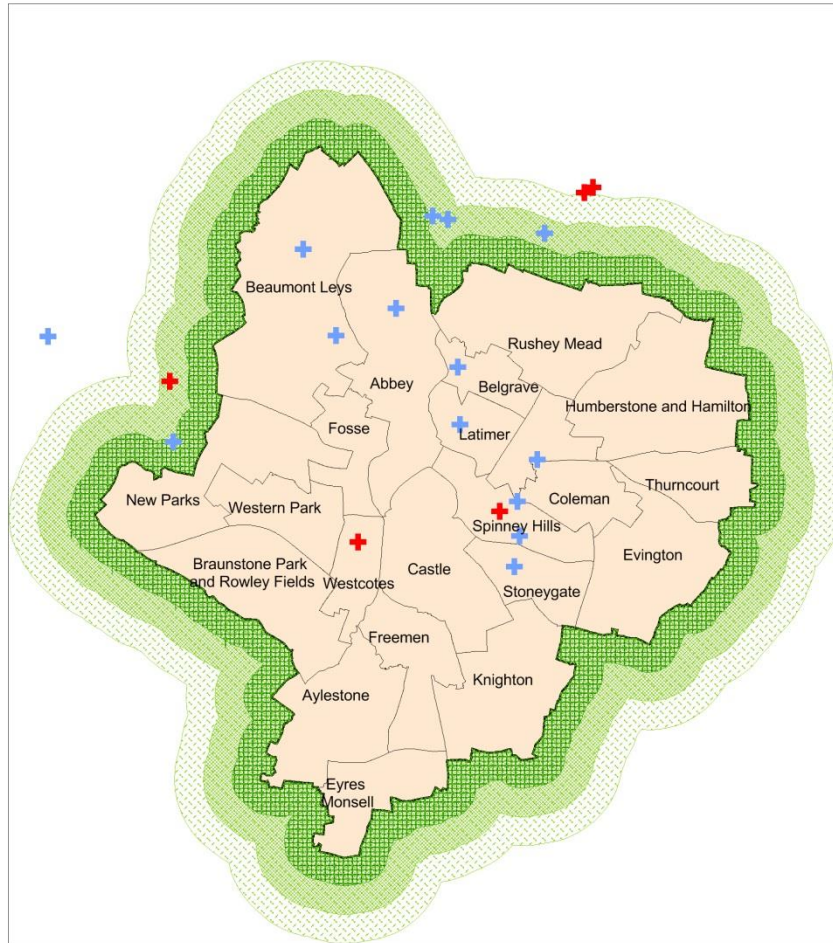
- 50 pharmacies are providing stop smoking services
- Pharmacy provision of Stop Smoking services:
 - Highest in Charnwood and Spinney Hills -5 pharmacies each
 - Low in Abbey, New Parks and Rushey Mead have low provision – 1 pharmacy each
 - No provision in Freeman or Evington
- High smoking prevalence (2010):
 - Eyres Monsell (43%)
 - New Parks (38%)
 - Freeman and Westcotes (36%)

Smoking Cessation 2

Ward name	Pharmacies with Stop Smoking Services	Estimated smoking prevalence 2010	Number setting a quit date	Number of 4 week quitters	% Successful quitters	Est smokers	Pharmacies offering smoking cessation per 1,000 smokers
Abbey	1	31.8%	54	23	42.6%	3567.8	0.3
Aylestone	2	26.7%	158	77	48.7%	2333.6	0.9
Beaumont Leys	2	28.5%	41	17	41.5%	3357.4	0.6
Belgrave	2	20.5%	37	22	59.5%	1844.4	1.1
Braunstone Park and Rowley Fields	2	34.8%	151	80	53.0%	4519.8	0.4
Castle	4	18.4%	117	61	52.1%	4112.3	1.0
Charnwood	5	30.0%	87	48	55.2%	2823.3	1.8
Coleman	3	28.3%	51	26	51.0%	2981.6	1.0
Evington	0	16.5%	0	0	0.0%	1433.8	
Eyres Monsell	2	43.2%	56	29	51.8%	3549.1	0.6
Fosse	2	28.9%	76	41	53.9%	2938.3	0.7
Freemen	0	36.1%	0	0	0.0%	3032.2	
Humberstone and Hamilton	3	32.5%	70	32	45.7%	4517.6	0.7
Knighton	2	9.3%	26	15	57.7%	1252.3	1.6
Latimer	3	12.1%	30	13	43.3%	1215.9	2.5
New Parks	1	38.1%	71	28	39.4%	4585.5	0.2
Rushey Mead	1	24.8%	12	5	41.7%	3114.9	0.3
Spinney Hills	5	18.2%	92	64	69.6%	3174.3	1.6
Stoneygate	3	11.3%	59	36	61.0%	1698.6	1.8
Thurncourt	2	32.5%	3	2	66.7%	2607.5	0.8
Westcotes	3	35.9%	184	85	46.2%	3723.3	0.8
Western Park	2	19.5%	27	19	70.4%	1693.1	1.2
Total	50	25.5%	1402	723	51.6%	64076.5	0.8

- 50 pharmacies are providing stop smoking services
- 1,402 people used the pharmacy based services to help them to stop smoking (13/14)
- 723 people were successful at stopping (4 weeks)
- In terms of estimated smokers
 - New Parks has lowest provision – 0.2 pharmacies per 1,000 smokers
 - Latimer has highest provision 2.5 pharmacies per 1,000 smokers
- Success rates:
 - Highest 4 week quit rates (n>5) from Western Park and Spinney Hills (70%)
 - Lowest 4WQ rates from New Parks (39% 4WQ) and high smoking prevalence (38% in 2010)

Palliative Care



Pharmacies offering Stop Smoking Services in Leicester City and surrounding area

Palliative Care Pharmacies

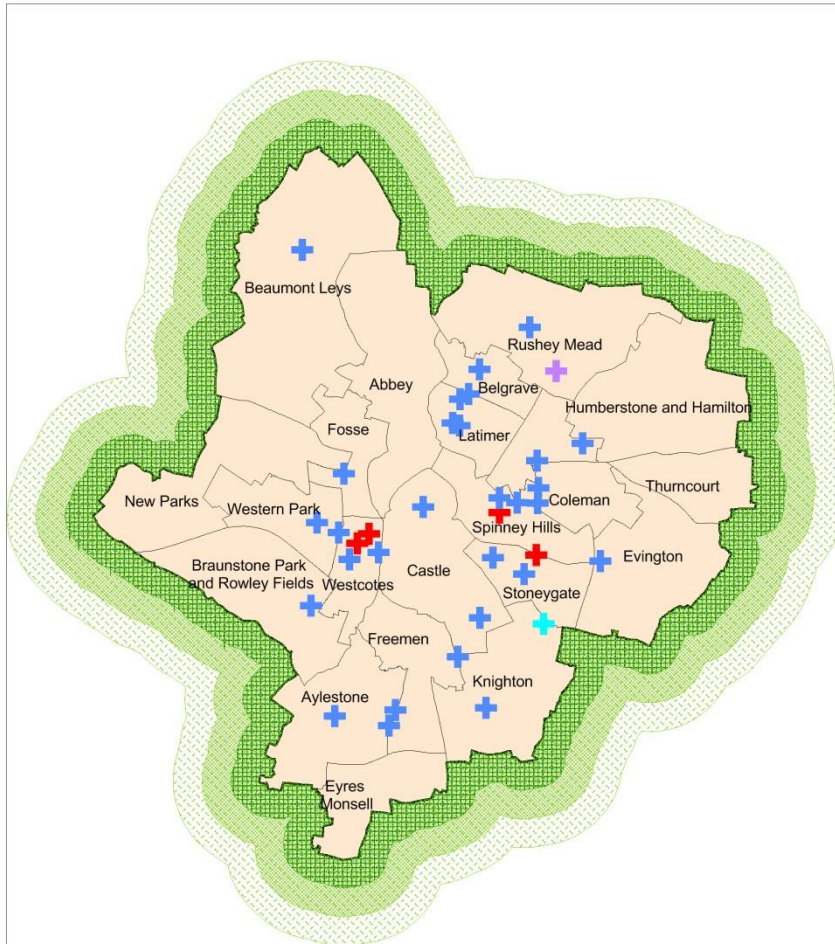
- + Community Pharmacy - 100 Hrs (2)
- + Community Pharmacy - 40 Hrs (9)

Distances from Leicester boundary

- 0 - 0.5 km
- 0.5 - 1.0 km
- 1 - 1.5 km

- 11 pharmacies providing a palliative care service
- Provision in 9 of Leicester's 22 wards
 - 2 pharmacies in each of Beaumont Leys and Spinney Hills
- Lack of provision in west and south of city
- Highest provision in Abbey (15 pharmacies per 100 people aged 85 years and over)
- Low in Abbey (0.3 per 100 85+ year olds)

H-Pylori Screening



Pharmacies offering Stop Smoking Services in Leicester City and surrounding area

H-Pylori testing Pharmacies

	Community Pharmacy - 100 Hrs	(4)
	Community Pharmacy - 40 Hrs	(30)
	ESPLPS	(1)
	Internet/ Distance Selling Pharmacy	(1)

Distances from Leicester boundary

	0 - 0.5 km
	0.5 - 1.0 km
	1 - 1.5 km

- 36 pharmacies providing the H-Pylori breath testing service
- Provision in 16 of Leicester's 22 wards
- Lack of provision in east and west of city near border
- No provision in Abbey, Eyres Monsell, Freeman, Humberstone and Hamilton, New Parks and Thurncourt
- Highest provision in Westcotes (33 pharmacies per 10,000 population)
- Low in Braunstone and Beaumont Leys (0.6 per 10,000)

Other Services

- Nationally most subscribed to services are:
 - Stop smoking
 - Supervised administration of methadone
 - Emergency hormonal contraception
 - Minor ailments schemes
 - Medications reviews
 - Needle Exchange
- User views – generally happy with the service. Would like to use further services such as travel vaccinations, flu vaccinations, cholesterol checks, NHS checks, blood pressure checks and weight management advice

Discussion

- Other gaps we should highlight
- Is there enough coverage within community
- Is there equitable coverage within community
- Should we be making any recommendations to NHS England about their future commissioning plans